

OPS FOREST STATION ELEMENTARY SCHOOL EMERGENCY RESPONDER RADIO COMMUNICATION ENHANCEMENT SYSTEM

1000 NORTH FORT CROOK ROAD
BELLEVUE, NEBRASKA

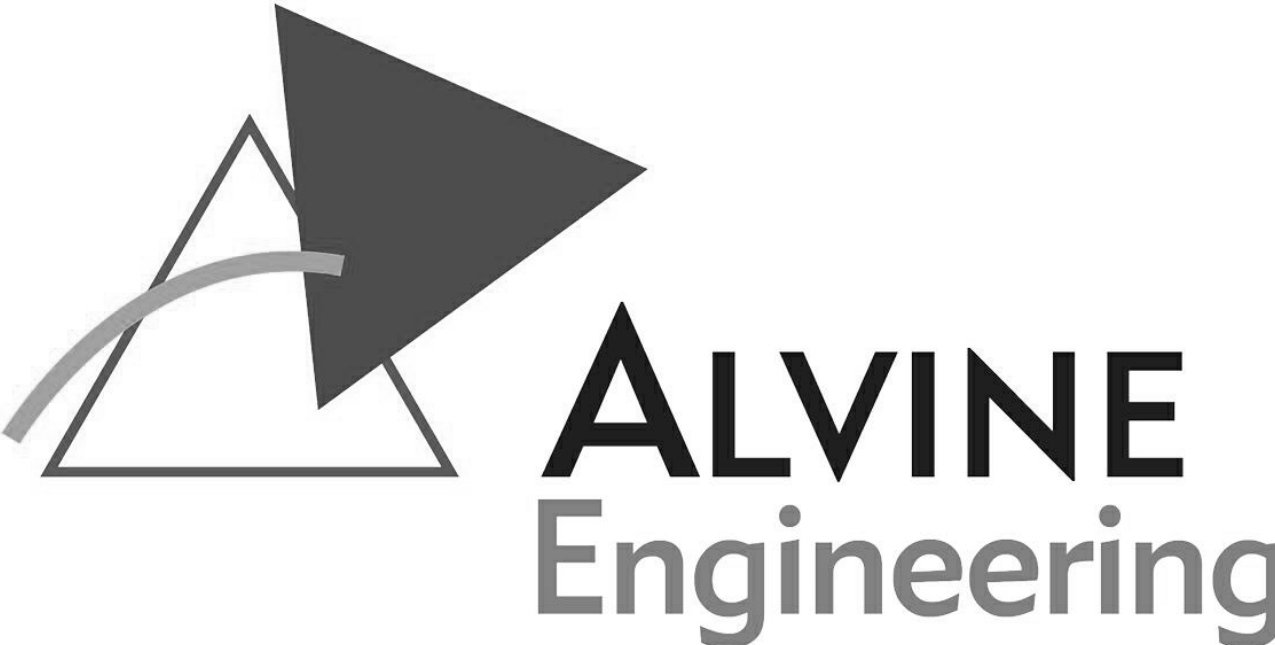
INDEX OF DRAWINGS

DISCIPLINE

E100	GROUND FLOOR & FIRST FLOOR PLANS
E101	SECOND FLOOR PLAN AND DETAILS

PROJECT DRAWINGS

12 AUGUST 2024
20241324

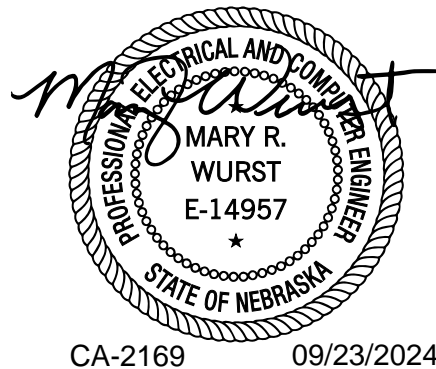


Omaha:
1201 Cass Street
Omaha, NE 68102
Phone: (402) 346-7007

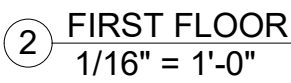
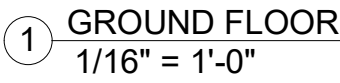
Lincoln:
1220 Lincoln Mall, Suite 200
Lincoln, NE 68508
Phone: (402) 477-6161

Oklahoma City:
1001 W. Wilshire Blvd., Suite 102
Oklahoma City, OK 73116
Phone: (405) 936-3480

Des Moines:
400 East Court Avenue, Suite 130
Des Moines, IA 50309
Phone: (515) 243-0569



CA-2169 09/23/2024




- A. INSTALL GREEN INSULATED GROUND WIRE WITH EACH LIGHTING, RECEPTACLE, AND EQUIPMENT BRANCH CIRCUIT.
- B. PROVIDE A DEDICATED NEUTRAL CONDUCTOR FOR EACH BRANCH CIRCUIT REQUIRING A NEUTRAL, UNLESS OTHERWISE NOTED.
- C. INSTALL CONDUIT AND BOXES LOCATED NEAR METAL ROOF DECKS SO THAT THE NEAREST OUTSIDE SURFACE OF THE CONDUIT OR BOX IS NOT LESS THAN 2 INCHES FROM THE NEAREST SURFACE OF THE ROOF DECKING, PROVIDE SPACERS AND SUPPORTS AS REQUIRED. RIGID METAL CONDUIT AND INTERMEDIATE METAL CONDUIT ARE NOT REQUIRED TO MAINTAIN THIS CLEARANCE.
- D. REPAIR OR REPLACE BUILDING ELEMENTS THAT ARE DAMAGED AS PART OF ELECTRICAL WORK.
- E. SEAL ELECTRICAL PENETRATIONS IN MECHANICAL AND ELECTRICAL ROOMS ABOVE OCCUPIED SPACES TO REDUCE NOISE TRANSMISSION.
- F. SEAL PENETRATIONS IN FIRE RATED CONSTRUCTION TO MAINTAIN RATINGS.
- G. EMERGENCY RESPONDER RADIO COVERAGE NATIONWIDE/UNIFIED SIGNAL TEST REPORT, DATED APRIL 20, 2024 PERFORMED BY VERITAS TECHNOLOGIES IS PROVIDED IN THE SPECIFICATION APPENDIX FOR REFERENCE.

DO NOT SCALE DRAWINGS. VERIFY ALL DIMENSIONS and clearances from ARCHITECTURAL, STRUCTURAL, shop and other appropriate drawing or at site. Lay out and coordinate all work prior to installation to provide clearances required for operation, maintenance, and codes and verify non-interference with other work. DO NOT FABRICATE PRIOR TO VERIFICATION OF CLEARANCE FOR ALL TRADES. READ SPECIFICATIONS.

© COPYRIGHT 2024 Permission to reproduce all or part of this Drawing is hereby granted solely for the limited purpose of construction of this project or for archiving. Unauthorized copying, disclosure or construction use without written permission of Alvine Engineering is prohibited by copyright law.

**OPS FOREST STATION ELEMENTARY
SCHOOL EMERGENCY RESPONDER
RADIO COMMUNICATION
ENHANCEMENT SYSTEM**



ALVINE


Engineering

Des Moler:
401 East Kent Avenue, Suite 130
Des Moines, IA 50309
Phone: (515) 251-0569

Onsolar:
1221 Ipswich Road, Suite 200
Lynch, NH 0826
Phone: (603) 884-7027

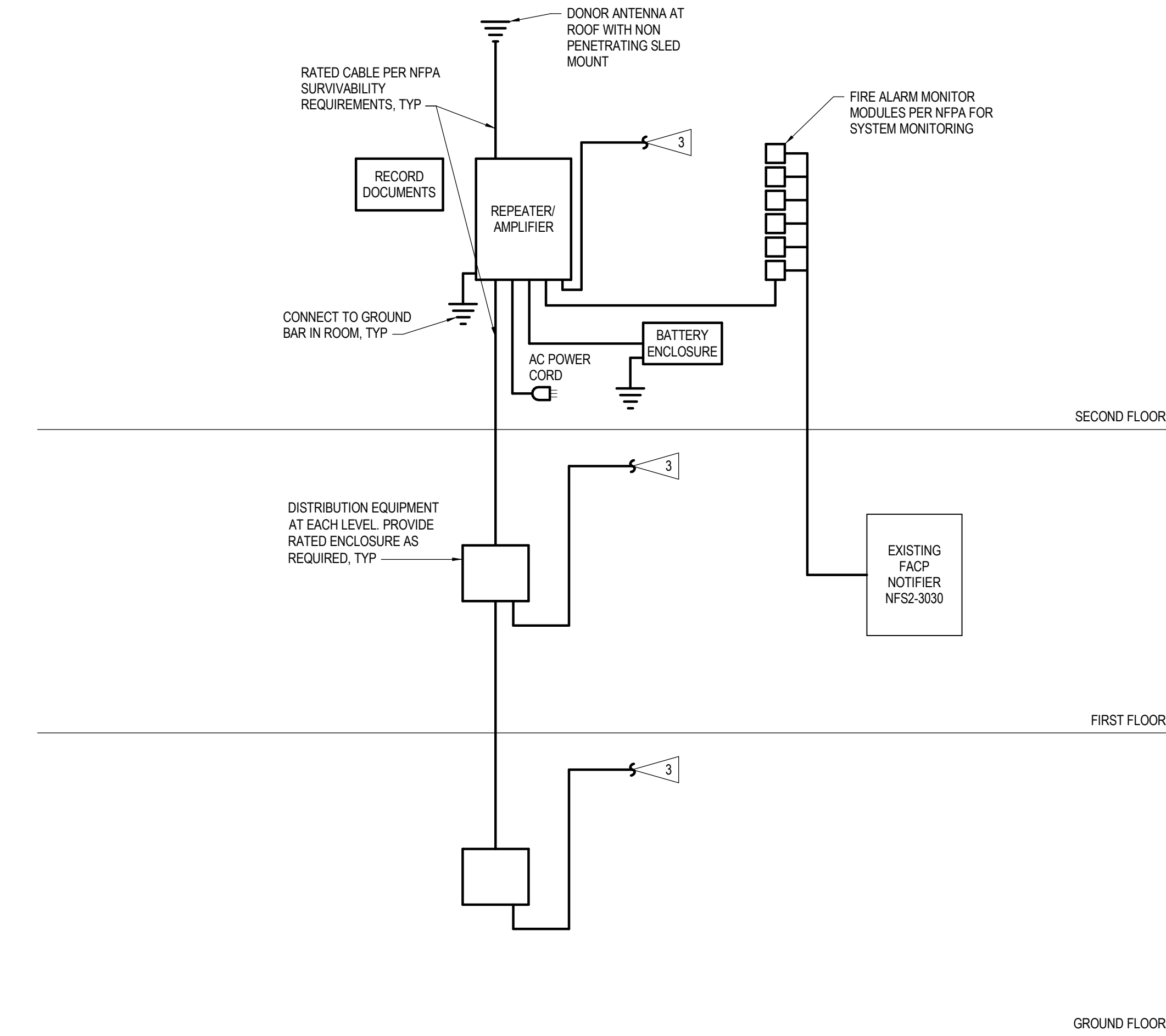
Lincos:
1221 Ipswich Road, Suite 200
Lynch, NH 0826
Phone: (603) 877-0361

Oshkosh City:
301 W. Village Blvd., Suite 102
Oshkosh, WI 54716
Phone: (414) 760-3480

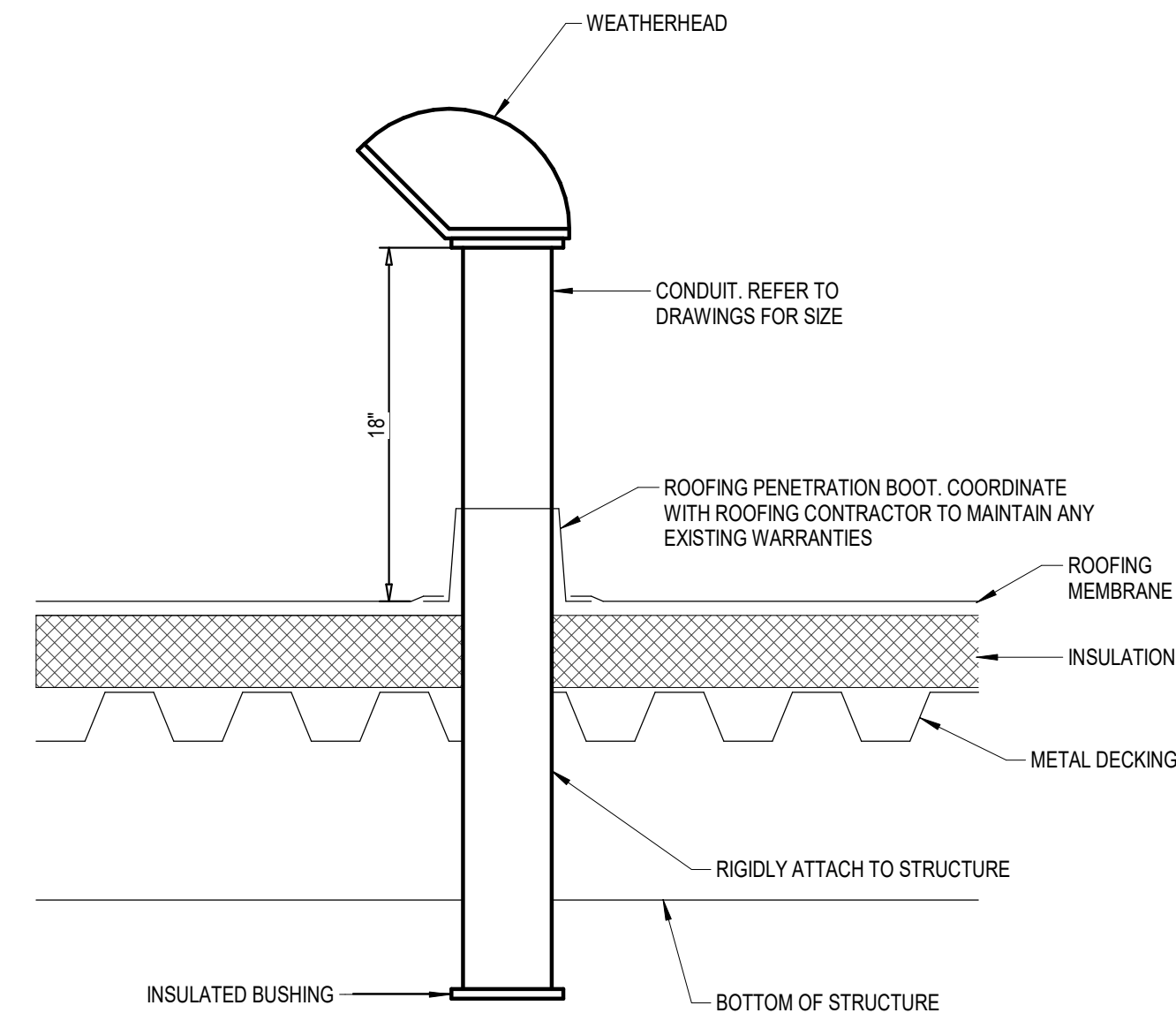
	Designed NRW	File Name
	Drawn MRG	Project No. 20241124
	Checked KJM	Drawing No. E100
	Date 12/31/2024	
	CA-2169 09/23/2024	

C:\Users\mgormar\Documents\20241324_MEPT_24_mgermor\Calvine.rvt 9/23/2024 1:36:42 PM

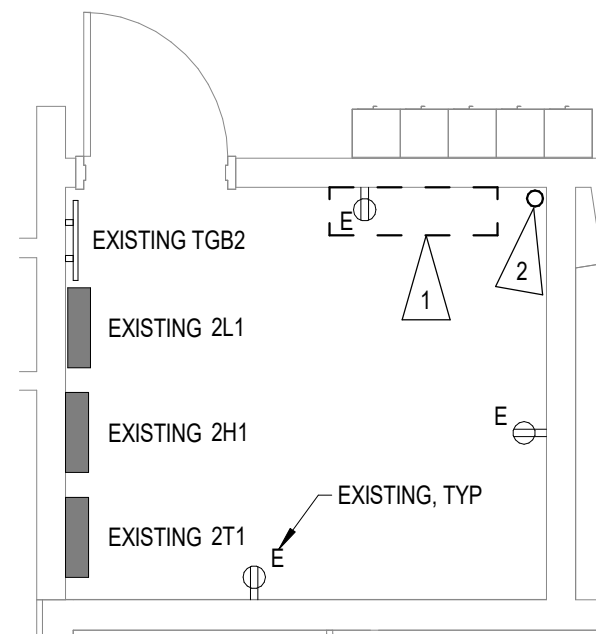
① SECOND FLOOR
1/16" = 1'-0"



② EMERGENCY RESPNDER RADIO COMMUNICATIONS SYSTEM (ERRCS) SCHEMATIC
12" = 1'-0"



③ CONDUIT STUB-UP AT ROOF
NO SCALE



④ DATA 229 - ENLARGED
1/4" = 1'-0"

FLAG NOTES

1. EMERGENCY RESPONDER DISTRIBUTED ANTENNA SYSTEM MAIN CABINET, PROVIDE 2 HOUR RATED ENCLOSURE, SEE SPECIFICATION FOR ADDITIONAL REQUIREMENTS.
2. 2" CONDUIT TO ROOF, CONTRACTOR TO DETERMINE LOCATION OF DONOR ANTENNA AND VERIFY FINAL PATHWAY LOCATIONS WITH OWNER. SEE DETAIL 3E101.
3. TO INDOOR ANTENNA DISTRIBUTION AT EACH LEVEL AS REQUIRED, TYP. PROVIDE PATHWAY SURVIVABILITY RATING PRE NFPA AND AHJ REQUIREMENTS.

No Revisions Date

DO NOT SCALE DRAWINGS. VERIFY ALL DIMENSIONS and clearances from ARCHITECTURAL, STRUCTURAL, shop and other appropriate drawing or at site. Lay out and coordinate all work prior to installation to provide clearances required for operation, maintenance, and codes and verify non-interference with other work. DO NOT FABRICATE PRIOR TO VERIFICATION OF CLEARANCE FOR ALL TRADES. READ SPECIFICATIONS.

© COPYRIGHT 2024 Permission to reproduce all or part of this Drawing is hereby granted solely for the limited purpose of construction of this project or for archiving. Unauthorized copying, disclosure or construction use without written permission of Alvine Engineering is prohibited by copyright law.

SECOND FLOOR PLAN AND DETAILS

OPS FOREST STATION ELEMENTARY
SCHOOL EMERGENCY RESPONDER
RADIO COMMUNICATION
ENHANCEMENT SYSTEM

1000 NORTH FORT CROOK ROAD
BELLEVUE, NEBRASKA



Omaha: 1201 Cass Street, Omaha, NE 68102, Phone: (402) 346-7007
Lincoln: 1220 Lincoln Mall, Suite 200, Lincoln, NE 68502, Phone: (402) 477-6161
Oklahoma City: 1301 N. Wilshire Blvd., Suite 102, Oklahoma City, OK 73103, Phone: (405) 558-3880
Des Moines: 400 East Court Avenue, Suite 100, Des Moines, IA 50309, Phone: (515) 242-0569

Designed Designer	File Name
Drawn Author	Project No. 20241324
Checked Checker	Drawing No. E101
Date 12 AUGUST 2024	